

**YOU** knew with that first flicker of an eyelid this morning that you were out of the rut.

Do you normally awaken to the shimmer of reflected light dancing across the ceiling, or hear a chuckle of water against your ear, and a magical whisper of wind in rigging to entice you up on deck? It was this alchemy that turned the day into a completely different experience.

So now, with the sun warm on your back, you taste again that electrifying sense of adventure and freedom which always comes when you feel the first kiss of wind in your sails.

Ahead, the coastline snakes away to the horizon, and the decision is yours alone: Will you spend your holiday exploring its bays and estuaries, or head out perhaps across the channel to France and those channels... and why not through them to the Mediterranean?

Astern of you a 70ft ketch, her sails straining, heads your way. There must be more than half a million pounds tied up in that elegant lady, you reflect. But this morning you are not a bit envious. Why should you be when you have your own trim 18ft glass fibre sloop to command?

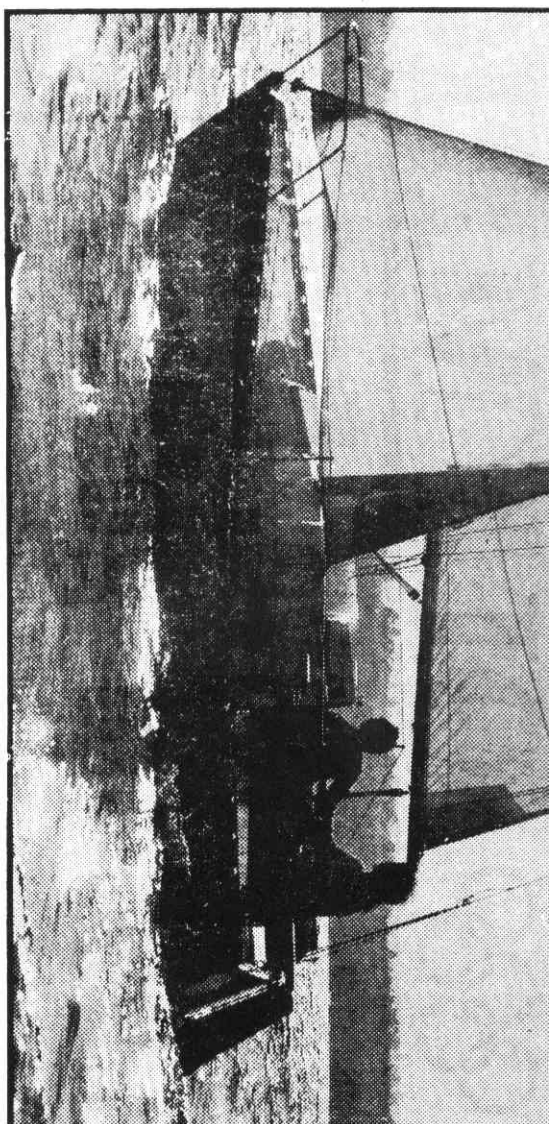
This Swift 18 will give you every bit as much fun, and the pleasant fact is that this little four-berth fully equipped, complete with engine and ready to sail away cost you just £5,627 including V.A.T.

What is more, she can snug up in very shallow berths, explore rivers, dry out safely on beaches and even be trailed overland behind a family car to any waters of your choosing—all of which are denied that queen of the oceans now trying desperately to overtake you.

### VERSATILE

Swift 18 is an exceptionally well constructed, versatile and easily handled sailing sloop from the yard of Swift Craft at Shamrock Quay, William Street, Southampton.

Her hull and deck are designed by Colin Silvester, while the interior and cockpit layout are by the owner and manager of the yard, John Charley, an experienced singlehanded transatlantic sailor. The combined experience shows I have not yet met a more attractive and functional boat for her size.



The Swift 18... ready to sail away for just £5,627.

# What fun she is for a family of four

by KENNETH DUXBURY

There is 1,620lb of positive buoyancy built into her hull which makes her unsinkable, even though completely swamped. The tall mainsail and well-proportioned foresail are both of hardwearing terylene set on a corrosion-proofed alloy mast and boom, and the foresail is fitted with roller reefing for quick reduction of sail in a strong wind.

All deck surfaces plus the cockpit side-seats and floor have an effective non-slip surface, and she has a neat stainless steel pulpit round the bow plus guardrails down either side for safety when at sea.

The cockpit is roomy with nicely angled coamings which form a comfortable backrest when seated at the lifting helm. Any owner will appreciate the really large sliding glass fibre hatch above the

entrance to her cabin.

This forms a handy place to stand from which one may attend to the mainsail and other running rigging without the need to go forward on deck. Most of the roller-rigging, including the roller-reefing line and foresail sheets, are led back to the cockpit where stout winches take the hard work out of the sailing.

Another very good detail feature is the compact internal housing for her four horsepower outboard engine. This has a cover which effectively mutes sound, and in fact becomes an inboard unit because the propeller projects down through the hull on the centreline. What is more it tilts to look in a raised position when beaching the boat.

Below deck there is good sitting headroom for four at

the aft end of her cabin where, at either side two quarter-berths run part-way back beneath each of the cockpit side seats.

At the fore end of these berths, about halfway down the cabin, there is at one side a neat galley unit housing a two-burner cooker with grill fed from a gas bottle stowed in its own vented locker aft of the cockpit. Opposite is a sink unit with hand pump and removable glass fibre basin supplied from a five-gallon fresh water tank beneath. Between these two units a removable worktop may be stowed to form a useful adjunct for the cook.

### CONVERTED

A robust teak table, hinged along its length for easy stowage, clips to the after bulkhead to give good eating space for four adults under the large hatch.

SWIFT 18 HAS A KICK-UP transom-mounted rudder and a double-chine hull. The keel, when fully retracted, still extends about three inches below the hull thus largely protecting the latter by taking most of the boat's weight when beached. I found her most responsive, even to the lightest wind, and any dainty sailor will find her a delight to handle single-handed. Due to her chine construction, beyond a minimal angle of heel she is surprisingly stiff, and she can float in a mere 10in or so of water. What is more, if you do forget to raise the keel and hit the bottom there will be little chance of damage. For the keel is free to lift without damage to the winch-up mechanism.

Under power alone she cruises at around six knots, and with a realistic all-up weight of say, around 1,800lb she may be trailed overland behind cars of 1,500 c.c. and above. Her specially constructed trailer with braking system, lighting set and the down strap costs £770-50p and is designed to make launching and recovery very easy indeed.

She is a neat, well finished and very attractive little craft in which a small family of three or four could have a great deal of fun coast-hopping for a fortnight's holiday.

For an extra £138-70 a spray hood is available to cover the fore end of the cockpit, and for £142-60 more an extension to this in the form of a tent can be supplied. This covers the entire cockpit and gives you, in effect, two extra children's berths on the side seats. All prices quoted include V.A.T.

### Specifications

- LENGTH OVERALL: 18ft.
- LENGTH WATERLINE: 16ft 4in.
- BEAM: 7ft 11in.
- DRAUGHT: Keel up, 9in, keel down, 3ft 6in.
- DISPLACEMENT: 1,450lb.
- TOTAL SAIL AREA: 199 sq ft.